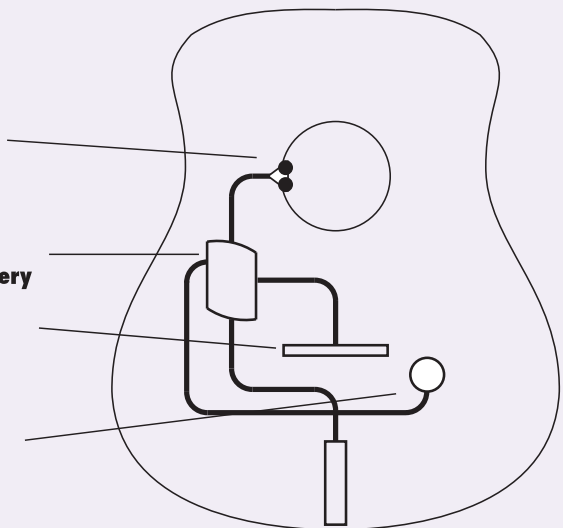


CONTROLS:
master vol + mix

GUITAR INTERNAL
PRE-AMPLIFIER
2x3V lithium battery

UNDERSADDLE
TRANSDUCER

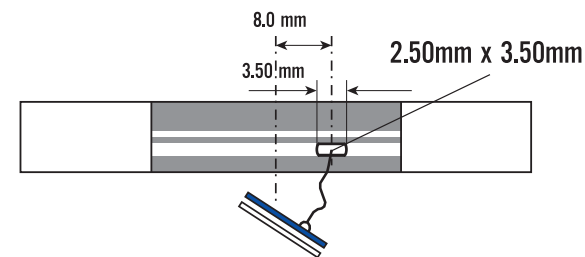
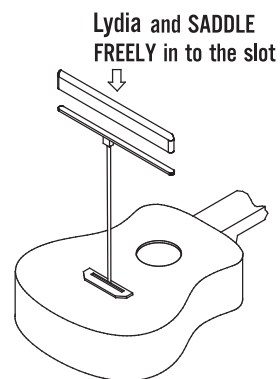
contact sensor
D-DYN



DUAL for classical guitars

LYDIA - POSITIONING

classical guitar

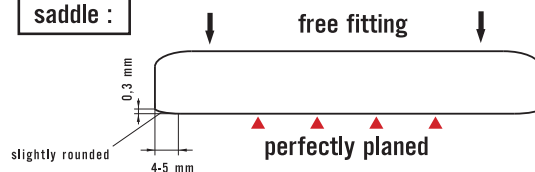


POSITION OF THE SADDLE BY REPLACING OF THE STRINGS

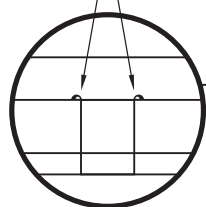
saddle slot :



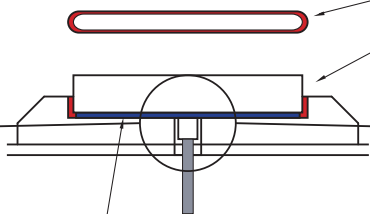
saddle :



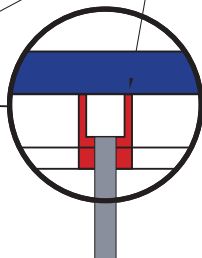
no splinters



Bluestick : free fitting

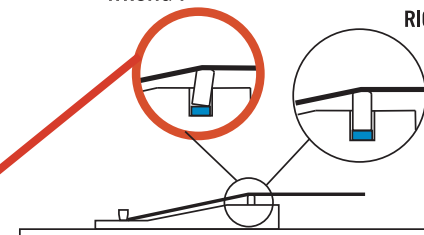


free space



WRONG !

RIGHT !



when change strings always
push with a piece of wood to
adjust the balance of the sound

